



FASSMER

FASSMER DUPLEX

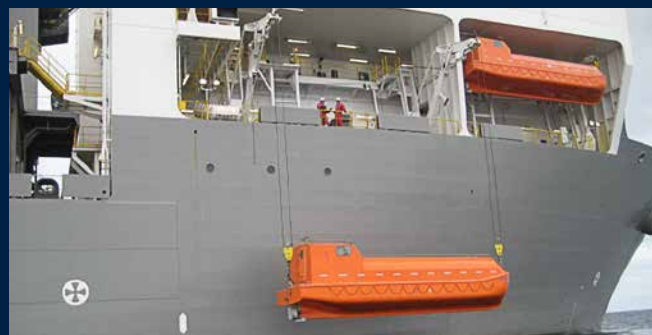
E2

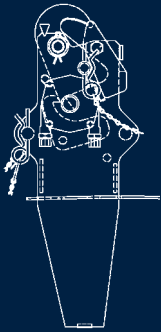
**The new generation
of safety at sea!**

Upgrading or rehooking!

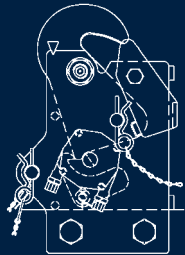
We make your lifeboats compliant acc. to the IMO regulations!

Just imagine: We can rehook 26 lifeboats within only 8 days! Your controller will be delighted!

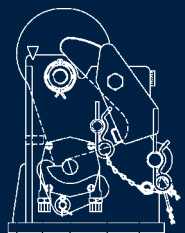




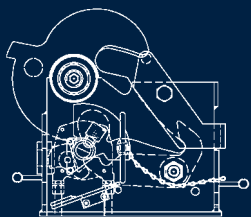
Duplex 25E2



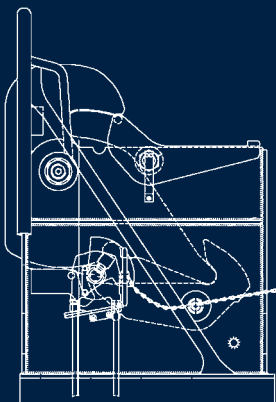
Duplex 50E2



Duplex 60E2



Duplex 140E2



Duplex 230E2

The new Fassmer Duplex E2 release and retrieval systems:

- The new Fassmer Duplex E2 release and retrieval systems are tested and approved. They are certified as exceeding the requirements listed in the IMO regulations MSC 320(89) and MSC 321(89).
- They can also be installed on NON-Fassmer lifeboats.
- They have a stable design, are stable under load and are always in a safe state and fail-safe.
- They are equipped with a secondary safety device, a so-called locking pin with a utility patent-registered anti-blockage system.
- Fassmer covers a SWL range from 2.5 tons to 23 tons.
- Fassmer has more than 30 years of experience in the design and operation of hooks, lifeboats and davits combined with high safety standards and simple maintainability.

Rehooking with Fassmer is simply a no-worry-package. It includes:

- Pre-inspection
- Calculating and engineering of foundation in our in-house design department
- Correspondence and certification by class authorities will be carried out by Fassmer.
- We plan the logistics of materials and service engineers in close contact with you.





**Compliant acc. to
MSC 320(89)/MSC 321(89)**

161 / 13

LOCKING
← **PIN**
Fit ONLY during
Training, Inspection,
Maintenance!

 Fassmer Schiffsservice GmbH & Co.KG
D-17248 Rechlin/Germany

 0736 	Duplex/SWL:	25T2/25 T
	Serial-No.:	1303467. 1
	Type Approval:	415.020
	Inspected by:	P.W.
	Month/Year:	4 / 13



The Fassmer service network:

- 24/7 expert support for your safety at sea
- More than 45 service stations all over the world
- Over 250 authorized service engineers in 40 countries, regularly trained to the latest IMO regulations, provide technical support on commercial ships, offshore rigs, cruise liners, navy vessels and yachts.
- They are backed up by the technical support of Fassmer engineering – including our in-house design department.
- Upgrading of Fassmer hooks, rehooking of non-Fassmer boats, inspections, regular maintenance and repairs, fleet service agreements, training of crew members to help operators of vessels to comply with the latest international SOLAS regulations
- **Service hotline +49 (0)1805 03 54 85**



Fassmer Headquarters Germany | Berne



Fassmer Germany | Reclin



Markos Poland | Globino



Fassmer-Marland China | Zhongshan

Fassmer Service GmbH & Co. KG

Industriestraße 2

27804 Berne

Germany

Phone +49 44 06 942-0

Fax +49 44 06 942-100

Fassmer.E2@fassmer.de

www.fassmer-service.de

